

Source Protection Committee - MINUTES

Minutes of Meeting of the Essex Region Source Protection Committee (SPC) held on **Wednesday, February 14, 2018**, in the Essex Civic Centre, Committee Room C, 360 Fairview Avenue West, Essex, Ontario.

Members Present: John Barnett – holding proxy for J-M Beneteau Tim Mousseau – holding proxy for B.Dukes
Paul Drca Cynthia Ouellet
Tom Fuerth (Chair) Hans Peter Pfeifer
Antonietta Giofu Nelson Santos
Thom Hunt Justine Taylor
Dave Monk – holding proxy for R.Barrette Larry Verbeke (SPA Liaison)
Ian Wilson

Absent:

Regrets: Jean-Marc Beneteau
Ron Barrette
Bill Dukes
Mike Tudor (Health Unit Liaison)

Staff: Katie Stammler, Project Manager, Source Water Protection/Water Quality Scientist
Candice Kondratowicz, Administrative Associate: Corporate Services
Ashley Gyori, Risk Management Official
Brittany Hayward, Risk Management Assistant
Laura Monforton, Risk Management Assistant

Delegates: None

Guests: Monica Reid, Windsor Utilities Commission, Compliance Officer

Seconded by Cynthia Ouellet

THAT Report SPC08/18 be received for information.

- CARRIED

OTHER BUSINESS

None

NEW BUSINESS

1. IJC Algae Bloom – there was a recent article published in the Windsor Star
<http://windsorstar.com/news/local-news/lake-erie-facing-deadly-decline-unless-actions-taken-ijc-says>

MEETING ADJOURNMENT

Resolution SPC14/18

Moved by Tim Mousseau

Seconded by Hans Peter Pfeifer

THAT the meeting be adjourned.

- CARRIED

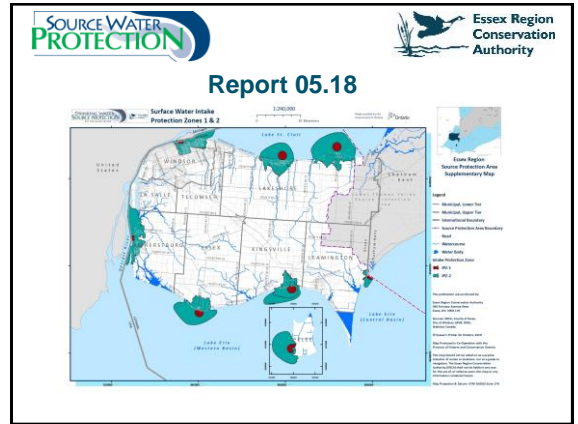
DATE – NEXT MEETING

The next meeting of the SPC will be held on Wednesday, April 11, 2018 at 4:00PM at the Essex County Civic Centre.

CONCLUSION OF MEETING



Katie Stammer,
Project Manager, Source Water Protection/
Water Quality Scientist



SOURCE WATER PROTECTION Essex Region Conservation Authority

Vulnerability scoring and Threat identification

Vulnerability Score = Area vulnerability factor x Source Vulnerability Factor

- Area vulnerability factor is based on characteristics of the local environment
- Source Vulnerability Factor is based on characteristics of the intake

Risk Score = Vulnerability Score x Hazard Score

- Hazard Score is assigned to each type of threat and is based on a number of factors
- Risk Score is used to determine whether an activity is a threat to an intake

| Category | Nearshore- Shallow Water | Nearshore- Deep water | Offshore- Shallow water | Offshore- Deep Water |
|---------------|--------------------------|-----------------------|-------------------------|----------------------|
| Depth | <6m | >6m | <6m | >6m |
| Distance | <300m | >300m | <300m | >300m |
| Vulnerability | High | High to Moderate | High to Moderate | Moderate |
| Proposed SVF | 0.7 | 0.6 | 0.6 | 0.5 |

SOURCE WATER PROTECTION Essex Region Conservation Authority

21 Prescribed Drinking Water Threat Activities

- 1 – waste disposal
- 2 – sewage
- 3 – application of Agricultural Source Materials
- 4 – storage of Agricultural Source Materials
- 5 – management of Agricultural Source Materials
- 6 – application of Non Agricultural Source Materials
- 7 – handling and storage of Non Agricultural Source Materials
- 8 – application of commercial fertilizer
- 9 – handling and storage of commercial fertilizer
- 10 – application of pesticide
- 11 – handling and storage of pesticide
- 12 – application of road salt
- 13 – handling and storage of road salt
- 14 – storage of snow
- 15 – handling and storage of fuel
- 16 – handling and storage of dense non-aqueous phase liquid (DNAPL)
- 17 – handling and storage of an organic solvent
- 18 – chemicals used in the de-icing of aircraft
- 19 – consumptive water taking
- 20 – activity that reduces the recharge of an aquifer
- 21 – livestock grazing and pasturing

Clean Water Act (General Reg. 287/07)

SOURCE WATER PROTECTION Essex Region Conservation Authority

Report 06.18

| | |
|------------------------------------------|------------------------------------------------------------------------------------------|
| s.34 Amendment (CWA) (SPA Proposes) | i.e. New/expanded systems Completion of technical work Implementation challenges |
| s.35 Order (CWA) (Minister's Order) | i.e. Minister's discretion (SPA unable to obtain municipal Support for amendments) |
| s.36 Update (CWA) (Mandatory Review) | i.e. Most SPP revisions e.g. new policies, new technical work |
| s.51 (O. Reg. 287/07) (SPA's Discretion) | i.e. Minor administrative errors e.g. correction of typographic errors |

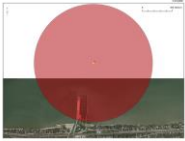
www.erca.org

SOURCE WATER PROTECTION Essex Region Conservation Authority

Report 02/18

www.erca.org

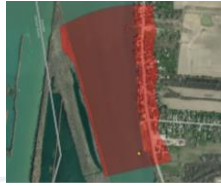
Report 06.18



Belle River (Lakeshore) IPZ-1



Windsor IPZ-1



Amherstburg IPZ-1

Aboutpipelines.com

